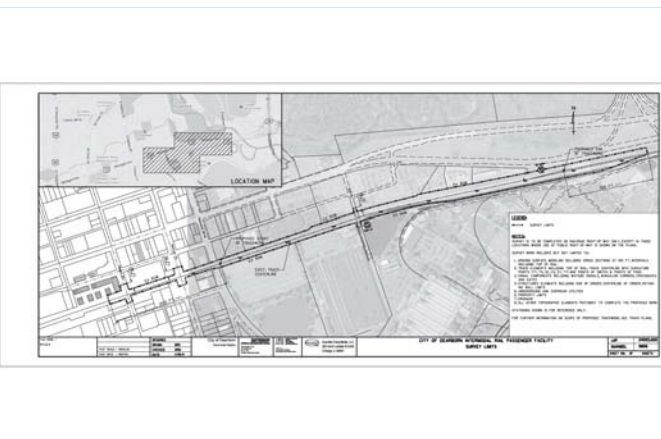


# City of Dearborn Passenger Rail Intermodal Facility



Client: City of Dearborn, Michigan

Location: Dearborn, MI



Quandel Consultants is serving as sub-consultant on the final design team to prepare final design plans for the track and signal improvements for a new intercity passenger station in Dearborn, MI.

The project is funded under a 2009 federal ARRA grant to improve intermodal passenger access to the region. Quandel Consultants staff evaluated a series of different track and station configurations under a series of previous studies leading to the preparation of an Environmental Assessment and Record of Decision. The team produced design criteria and geometric design plans for review with the host railroads, Norfolk Southern and Amtrak.

The selected alternative includes a new station facility with side platforms and an overhead passenger walkway that will provide safe movement of pedestrians across the tracks.

The station provides a new intermodal hub for pedestrians, bike, bus, taxi, private automobile and both intercity and commuter rail. The existing second track will be extended approximately one half mile through the station to allow train access to both platforms. The existing interlocking will be relocated to the west.

ENTER COMPANY NAME

Enter Name of Project

PHOTO

PHOTO

Owner:  
Location:  
Project size:  
Architect:

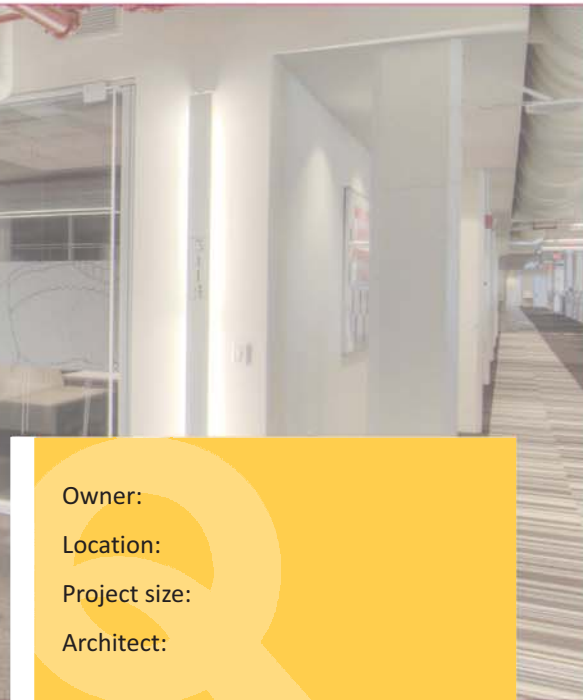
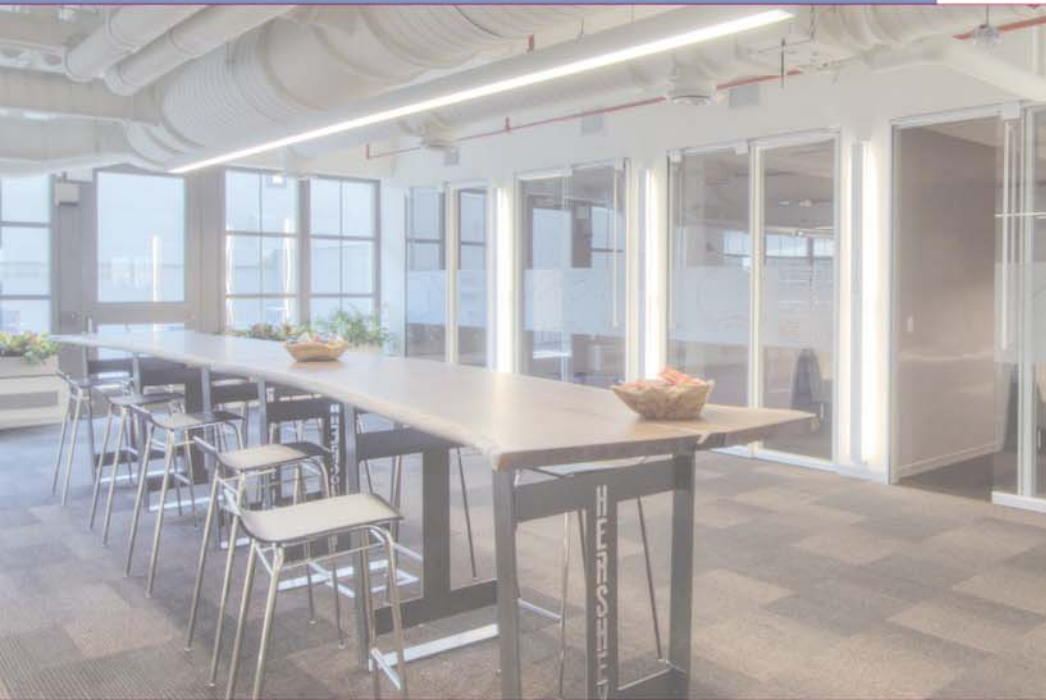
Enter text

“

Enter testimonial text

**FIRST LAST**  
Title  
Company Name





Owner:  
Location:  
Project size:  
Architect:



The Hershey Company selected the Quandel Group to renovate space previously utilized for production into offices for the Global Shared Services Group at the company's international headquarters in Hershey, Pennsylvania.

The conversion from an industrial building into a functional, dynamic office space included the meticulous demolition of existing concrete and stone walls and ceilings to create windows and skylights, the construction of a new stair tower to provide additional egress from the building, and the integration of new mechanical systems within the building's existing infrastructure.

To preserve the buildings heritage, the existing concrete roof structure and columns remained exposed and serve as architectural focal points. Existing stone walls were preserved and restored to maintain historical elements of the building. Constructed as a Silver LEED Certified project, the Hershey 19 East Offices also feature exposed spiral ductwork, modern lighting, and sleek finishes to create an inviting work environment.

“

Converting an industrial type building into a world-class office space brought about many challenges.

The Quandel Group project managers met each of these challenges with fast and workable solutions to preserve the historical heritage of the building while keeping the project on track and under budget. In fact, all of the challenges presented by this renovation project did not impact the aggressive five-month schedule; every phase of the project was managed with intricate attention to detail. I would highly recommend the Quandel Group as the construction management firm for future projects.

ED BUCHAN  
Project Manager  
Title  
The Hershey Company  
Company Name

