



ANN ARBOR - DETROIT REGIONAL RAIL PROJECT

RAIL PLANNING & ENGINEERING • ENVIRONMENTAL PLANNING • GEOSPATIAL TECHNOLOGY

Project Description

Quandel has served as General Engineering Consultant to Michigan Department of Transportation (MDOT) and Southeast Michigan Council of Governments (SEMCOG) for the Ann Arbor-Detroit Regional Rail project, a planned 38 mile commuter rail operation.

Specific tasks undertaken by Quandel for this project included:

- conceptual design for two new passenger rail stations,
- conceptual design for two rail layover facilities,
- conceptual design for a maintenance facility,
- development of a corridor-wide signage program including final plans and specifications, and
- serving as an advisor to MDOT for the rehabilitation of stainless steel bi-level coaches.

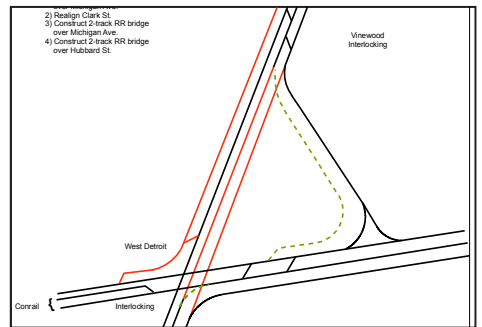
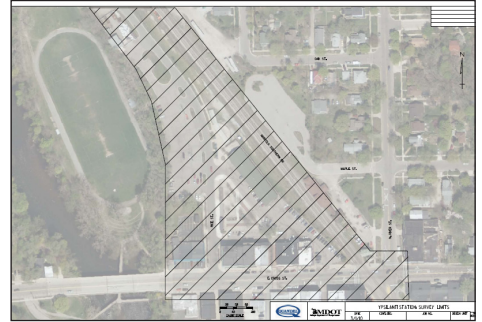
Quandel generated a series of program management plans in accordance with Federal Transit Administration and Federal Railroad Administration guidelines including the following:

- Project Management Plan
- Project Quality Management Plan
- Financial Plan
- Safety & Security Management Plan
- Safety & Security Certification Plan
- System Safety Program Plan
- Operating Plan
- Testing & Commissioning Plan for Rolling stock
- Risk Management Plan
- Contract Management Plan
- Maintenance Plan
- Performance Standards
- Fire Safety Analysis
- Emergency Preparedness Plan
- Business Plan

The design services provided for the stations included several build alternatives for two proposed station sites involving station buildings, platforms, parking lot, drainage, lighting and preliminary roadway design.

Quandel assisted MDOT and SEMCOG for the following:

- Negotiations with the freight railroads and defining any further requirements for computer simulation for capacity analysis
- Preparing scoping documents
- Reviewing design plans, specifications and cost estimates for civil, structural and track elements to ensure compliance with the needs of the commuter rail system and respective agreements with each railroad



QUANDEL ENTERPRISES, INC.



The Quandel Group, Inc.



Quandel Consultants, LLC